

## Construction Linked Payment Plan 'C'

Booking Amount	10% of BSP
Within 60 days of Booking	10% of Basic cost
On Bhoomi Pujan	10% of Basic cost
On Start of Foundation Work	10% + 25% of Lease Rent
On Start of Ground Floor Roof slab	7.5% + 25% of Lease Rent
On Start of Second Floor Roof slab	7.5% + 25% of Lease Rent
On Start of Fifth Floor Roof slab	7.5% + 25% of Lease Rent
On Start Of Eighth Floor Roof slab	7.5% + 50% of Car Parking
On Start of Twelfth Floor Roof slab	7.5% + 50% of Car Parking+ 25% of IFMS + 25% of CRF
On Start of Fifteenth Floor Roof slab	7.5% + 50% Electrification Charges +25% of IFMS + 25% of CRF
On Start of Brick Work	5% + 50% Electrification Charges+ 25% of IFMS + 25% of CRF
On Start of Electrification Work	5% + 25% of IFMS + 25% of CRF
On Offer of Possession Letter	5% of Basic Cost + Other Charges

### Terms and conditions:

- 1) Cheques/Bank Drafts to be issued in favour of 'Supertech Realtors Pvt. Ltd.' payable at New Delhi/Noida. Out station cheques shall not be accepted.
- 2) Electricity Installation Charges, Maintenance Charges, Meter Connection Charges and other charges are extra and shall be collected before the possession.
- 3) Service tax, VAT & other government levies are extra, as applicable.
- 4) Registration, Stamp Duty and misc. charges shall be payable at the time of Offer of Possession.
- 5) Super Area includes the covered area plus the proportionate area under Common Corridor, Passages, Staircases, Mummies, Projections, Water Tanks, Lift Wells, etc.
- 6) The terms and condition of sale stated herein are preliminary and are subject to detailed terms & conditions in the 'Agreement to Sell'/'Flat Buyer's Agreement' and are subject to change at sole discretion of the company.
- 7) All building plans, layouts, specifications are subject to changes and modifications as decided by the company, architect or any other competent authority.
- 8) Timely payments of the installments is the essence of the Booking.
- 9) **This Price List supercedes all previous price lists**

Site Office: Plot No. 3, Sector-94, Noida 201 301

Head Office: Supertech House, B 28-29, Sector 58, Noida 201307, Ph.: 0120 4572600

Call 1800 103 7676 | www.supernova.in



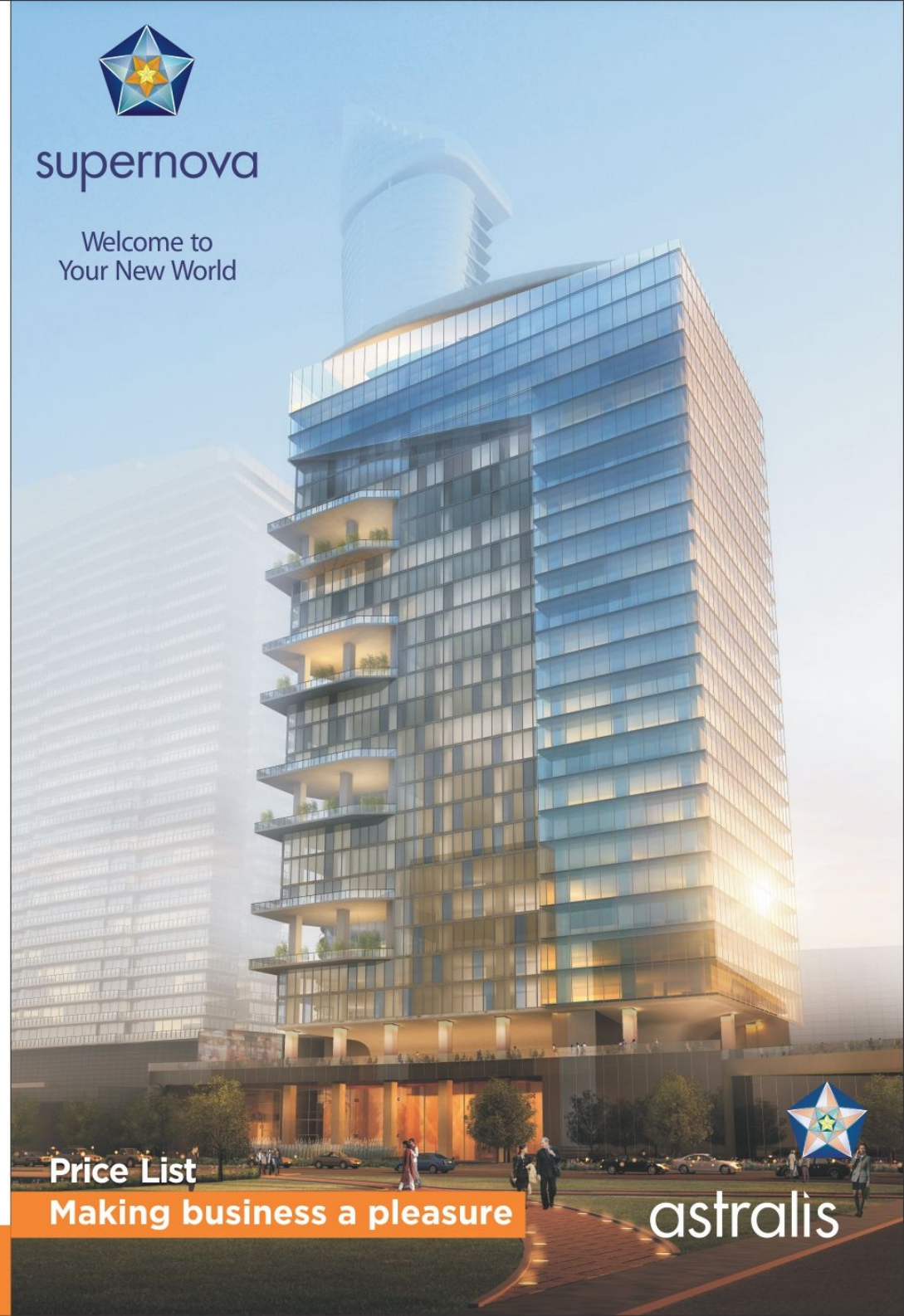
supernova

Welcome to  
Your New World

Price List

Making business a pleasure

astralis



## Price List

w.e.f. 7th December, 2013

**Centrally A/c office spaces from 5th to 28th Floor**  
**Minimum Office Area: 703 sq. ft. (approx.)**

**Booking Amount : 10% of BSP**

5th to 26th Floor (Office)	CLP	FLEXI	DP
Basic Sale Price (Rs. per sq. ft.)	12,500/-	11,875/-	11,250/-

Preferential Location Charges	Rs. per sq. ft.
<b>(Upto 12th Floor)</b>	
Podium Facing (Unit No. 1, 16 to 26)	Rs. 300/-

<b>Basement Car Parking Charges</b>	Rs. 5,00,000/- per slot
-------------------------------------	-------------------------

**Additional Charges:** One Time (Rs. per sq. ft.)

Lease Rent Rs. 550/- , Interest-Free Maintenance Security Rs. 100/-

Capital Replenishment Fund Rs. 150/-, Elec. Installation Charges Rs. 20,000/- per Kw

Meter connection charges Rs. 20000/- for single phase, Rs. 25000/- for double phase.

## Payment Plans

### Down Payment Plan 'A'

Booking Amount	10% of BSP
Within 30 days from Booking	85%*
On offer of Possession	05%* + Other Charges
*Including all Allied Charges	

### Flexi Payment Plan 'B'

Booking Amount	10% of BSP
Within 60 Days Of Booking	40%* of Basic Cost
On Start Of Foundation Work	09%* of Basic Cost
On Start Of Ground Floor Roof Slab	09%* of Basic Cost
On Start Of Fifth Floor Roof Slab	09%* of Basic Cost
On Start Of Eighth Floor Roof Slab	09%* of Basic Cost
On Start Of Twelfth Floor Roof Slab	09%* of Basic Cost
On Offer Of Possession Letter	05%* of Basic Cost
*Including all Allied Charges	

L.R. = Lease Rent

C.P. = Covered Car Parking

C.M. = Club Membership

P.L.C. = Preferential Location Charges

I.F.M.S. = Interest Free Maintenance Security

C.R.F. = Capital Replacement Fund